

Comprising a 35-storey SERVICE RESIDENCE TOWER, an internationally branded 5 Star AMARI HOTEL and a 2-storey entertainment cum retail ZENITH LIFESTYLE CENTRE, SUASANA forms an integral part of the city's massive redevelopment and transformation program which welcomes a new and energetic urban boulevard of alfresco entertainment, shopping therapy and cultural hotspots in the city

SUASANA

Iskandar Malaysia
Serviced Residence

FREEHOLD



Superior Facilities

Setting Prestigious Benchmarks



Suasana offers a wide range of recreation, exercise and relaxation facilities to its residents. Enjoy stunning city views from the tranquil sky pool or the fully-equipped gym, or simply lounge on the sky deck built around a rooftop garden. Suasana also provides another relaxing avenue in Suasana Suites Cafe, where you can enjoy your morning coffee atop the residence with views of Johor Bahru and Singapore.



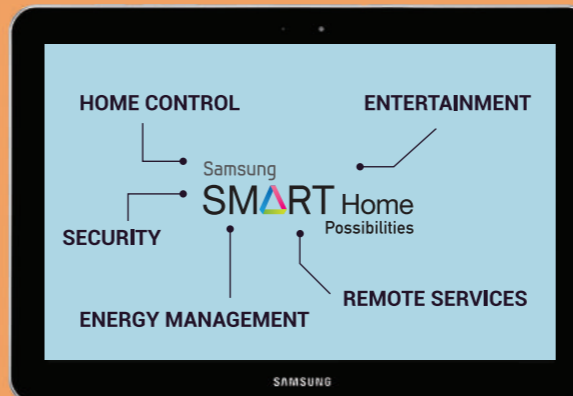
Disclaimer
 Each unit is fitted only with the Samsung Smart Home Feature - Entry Level. Additional comprehensive features as shown on this leaflet can be upgraded by the owner at their cost. Terms & Conditions apply



Smart Home Partnership

Via a UMLAND - SAMSUNG Smart Partnership, Suasana has realized the concept of connected living. With the Samsung Smart Home phone applications, residents can gain full access and control of their home systems.

The Samsung Smart Home phone application is available on both Android and iOS platforms to keep you always connected.



SUA SANA

Iskandar Malaysia

Suasana Serviced Residence • Amari Hotel • Zenith Mall

The Newest Landmark in Johor Bahru City Centre

Singapore

Woodlands North
Targeted Completion: 2019
Linked to RTS Bukit Chagar

CIQ Checkpoint

JB Sentral

City Square

Komtar

Amari
JOHOR BAHRU
Hotel

SUA SANA
Serviced
Residence

zenith
F&B Retail

IIBD Coronation Square

DoubleTree

RTS Bukit Chagar
Targeted Completion: 2024
Linked to Woodlands North



JB Sentral
Transportation Hub
Shuttle Tebrau
Train Station
(JB Sentral - Woodlands)

Sultan Iskandar
Customs Complex
(CIQ)

Future Bukit Chagar
RTS Station Link to
Singapore MRT System

Future Woodlands
North MRT Station

Future
Orchard Road
MRT Station

Future
Marina Bay
MRT Station

The Suasana Transformation at Iskandar Malaysia

SUASANA JBCC's newest upmarket tri-development takes centre stage along the corridors of Jalan Wong Ah Fook and Jalan Trus, and is just a short walking distance to JB Sentral, Johor Immigration (CIQ) and the future Rapid Transit System (RTS) Station at Bukit Chagar



Brought to you by



UNITED MALAYAN LAND BHD
 Suasana Bukit Ceylon, (4131-M)
 No.2, Persiaran Raja Chulan,
 50200 Kuala Lumpur, Malaysia.

T : +603 2036 8155 / 8166 / 8199

SUASANA SALES GALLERY
 No. 82, Jalan Trus,
 80000 Johor Bahru, Johor

T : +607 213 2233

UMLAND SALES GALLERIA
 Anson House, 72, Anson Road
 #01-02, Singapore 079911

T : +65 6532 3375
 E : serisuasana@umland.com.my

+6016 775 2757
+607 213 2233

www.thesuasana.com.my

All furniture and built-in items are subject to change. All art renderings and photographs contained herein are artist's impressions only. All plans, layout, information and specifications are subject to change and cannot form part of an offer or contract representation.

Stage of Completion : COMPLETED

SUASANA
 Iskandar Malaysia

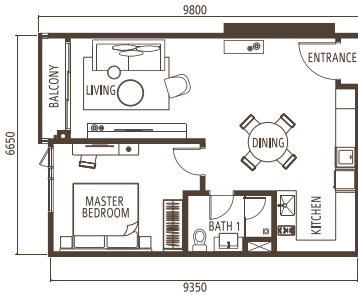
FLOOR PLAN

TYPE A

1 Bedroom

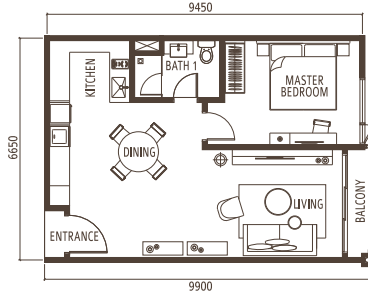
TYPE A1

1 BEDROOM
63.2 sq.m. (680 sq.ft.)



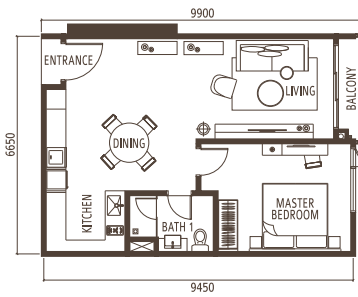
TYPE A4

1 BEDROOM
63.9 sq.m. (688 sq.ft.)



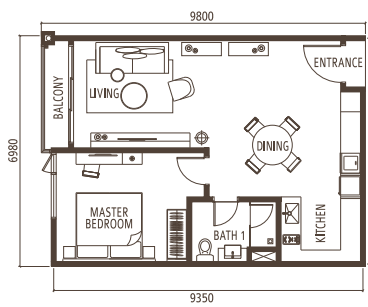
TYPE A2

1 BEDROOM
63.9 sq.m. (688 sq.ft.)



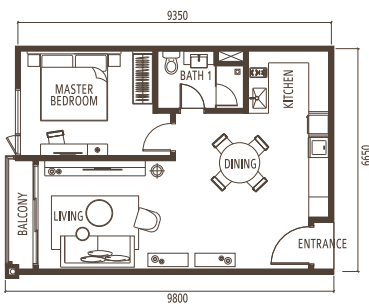
TYPE A5

1 BEDROOM
65.0 sq.m. (700 sq.ft.)



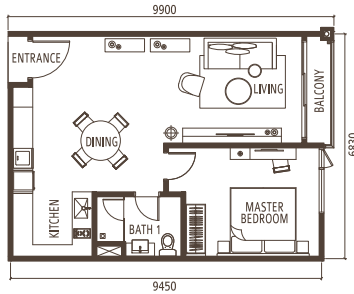
TYPE A3

1 BEDROOM
63.3 sq.m. (681 sq.ft.)



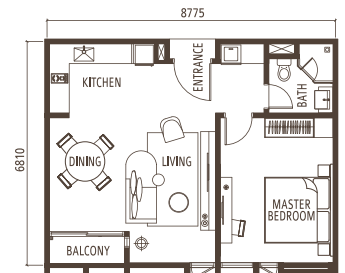
TYPE A6

1 BEDROOM
65.7 sq.m. (707 sq.ft.)

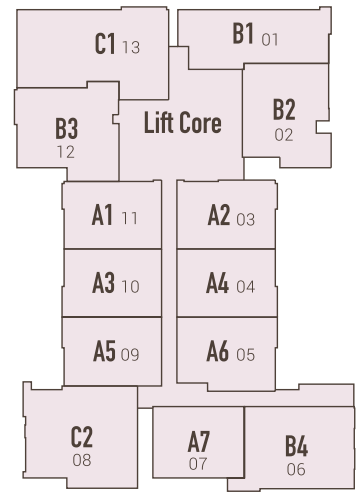


TYPE A7

1 BEDROOM
59.8 sq.m. (644 sq.ft.)



Jalan Trus



Jalan Wong Ah Fook

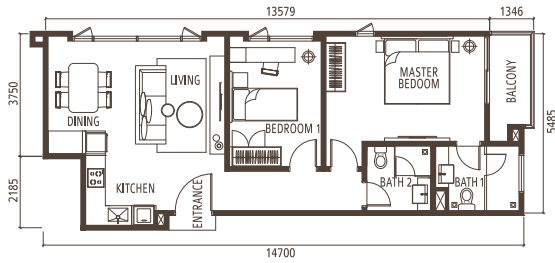
FLOOR PLAN

TYPE B

2 Bedrooms

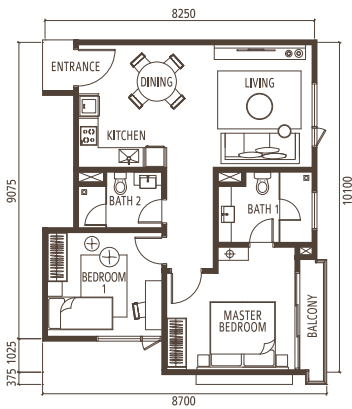
TYPE B1

2 BEDROOMS
79.3 sq.m. (854 sq.ft.)

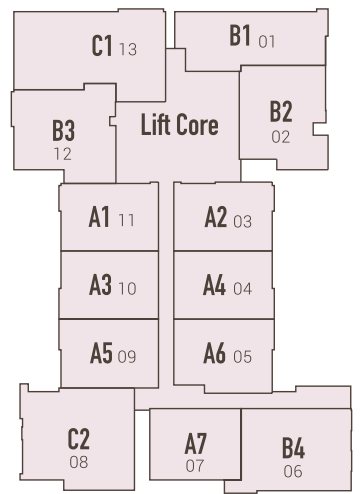


TYPE B2

2 BEDROOMS
76.5 sq.m. (823 sq.ft.)



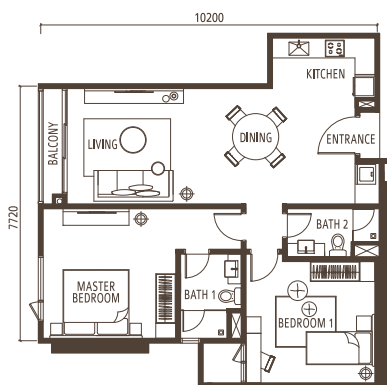
Jalan Trus



Jalan Wong Ah Fook

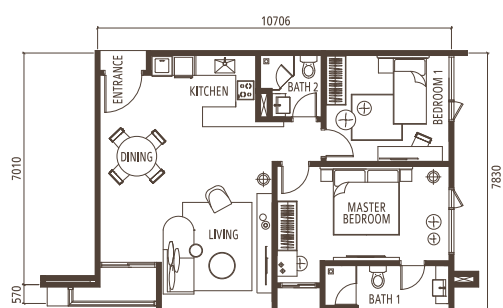
TYPE B3

2 BEDROOMS
91.8 sq.m. (988 sq.ft.)



TYPE B4

2 BEDROOMS
84.2 sq.m. (907 sq.ft.)



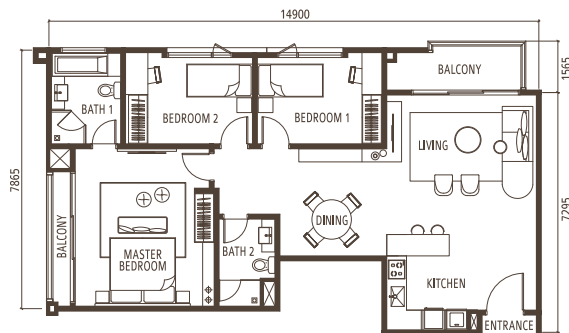
FLOOR PLAN

TYPE C

3 Bedrooms

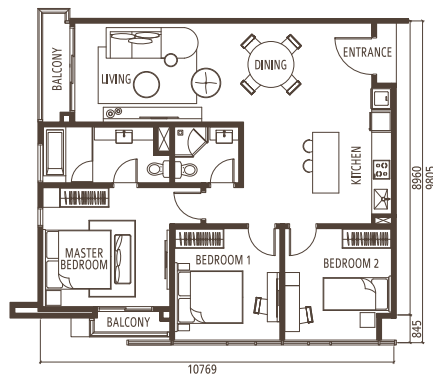
TYPE C1

3 BEDROOMS
114.7 sq.m. (1,235 sq.ft.)

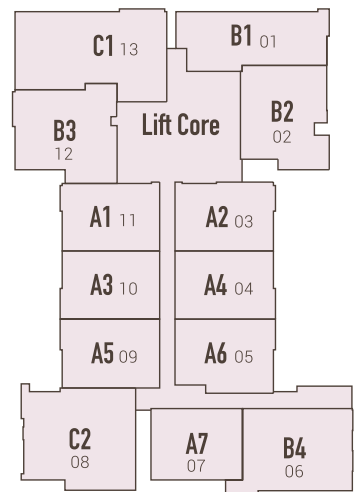


TYPE C2

3 BEDROOMS
103.6 sq.m. (1,115 sq.ft.)



Jalan Trus



Jalan Wong Ah Fook