

STAR  
RESIDENCES  
— KLCC —

FLOOR PLAN

# A STARSTUDDED ICON IN KLCC



STAR RESIDENCES

STAR BOULEVARD

Star Residences and Star Boulevard are the perfect embodiment of a beautiful vision made into exuberant reality. With its avant-garde design and stunning elegance throughout, these developments create a fabulous whole – the new frontier of city living above the ordinary.



## FACILITIES

1. Hydrotherapy Spa Lounge
2. Heated Dip Pool
3. Hydro Massage Therapy Room
4. Changing Room (M)
5. Changing Room (F)
6. Lift Lobby



STAR RESIDENCES   TWO										
Level	KLCC / KL TOWER			POOL VIEW			GENTING HIGHLANDS / AMPANG			KL CITY / KLCC
57	SKYDECK									
Unit No	2-56-1	2-56-2	2-56-3	2-56-4	2-56-5	2-56-6	2-56-7	2-56-8	2-56-9	2-56-10
Type	G	C	D	F2	F2	F2	F2	F2	F2	F2
Built-up (SF)	2,972	948	1,206	1,206	1,206	1,206	1,206	1,206	1,206	1,400
Unit No	2-55-1	2-55-2	2-55-3	2-55-4	2-55-5	2-55-6	2-55-7	2-55-8	2-55-9	2-55-10
Type	D	C	C	C	C	C	C	C	C	C
Built-up (SF)	2,972	948	1,206	1,206	1,206	1,206	1,206	1,206	1,206	1,400
55A	2-53A-1	2-53A-2	2-53A-3	2-53A-4	2-53A-5	2-53A-6	2-53A-7	2-53A-8	2-53A-9	2-53A-10
Type	F1	D	C	D	D	D	D	D	D	D
Built-up (SF)	1,809	1,206	948	1,206	1,206	1,206	1,206	1,206	1,206	1,400
53	2-53-1	2-53-2	2-53-3	2-53-4	2-53-5	2-53-6	2-53-7	2-53-8	2-53-9	2-53-10
Type	F1	D	C	D	D	D	D	D	D	D
Built-up (SF)	1,809	1,206	948	1,206	1,206	1,206	1,206	1,206	1,206	1,400
52	2-52-1	2-52-2	2-52-3	2-52-4	2-52-5	2-52-6	2-52-7	2-52-8	2-52-9	2-52-10
Type	A2	B1	B2	A1	C	A1	B2	B3	C	E
Built-up (SF)	722	797	819	711	948	711	819	851	948	1,400
51	2-51-1	2-51-2	2-51-3	2-51-4	2-51-5	2-51-6	2-51-7	2-51-8	2-51-9	2-51-10
Type	A2	B1	B2	A1	C	A1	B2	B3	C	E
Built-up (SF)	722	797	819	711	948	711	819	851	948	1,400
50	2-50-1	2-50-2	2-50-3	2-50-4	2-50-5	2-50-6	2-50-7	2-50-8	2-50-9	2-50-10
Type	A2	B1	B2	A1	C	A1	B2	B3	C	E
Built-up (SF)	722	797	819	711	948	711	819	851	948	1,400
49	2-49-1	2-49-2	2-49-3	2-49-4	2-49-5	2-49-6	2-49-7	2-49-8	2-49-9	2-49-10
Type	A2	B1	B2	A1	C	A1	B2	B3	C	E
Built-up (SF)	722	797	819	711	948	711	819	851	948	1,400
48	2-48-1	2-48-2	2-48-3	2-48-4	2-48-5	2-48-6	2-48-7	2-48-8	2-48-9	2-48-10
Type	A2	B1	B2	A1	C	A1	B2	B3	C	E
Built-up (SF)	722	797	819	711	948	711	819	851	948	1,400
47	2-47-1	2-47-2	2-47-3	2-47-4	2-47-5	2-47-6	2-47-7	2-47-8	2-47-9	2-47-10
Type	A2	B1	B2	A1	C	A1	B2	B3	C	E
Built-up (SF)	722	797	819	711	948	711	819	851	948	1,400
46	2-46-1	2-46-2	2-46-3	2-46-4	2-46-5	2-46-6	2-46-7	2-46-8	2-46-9	2-46-10
Type	A2	B1	B2	A1	C	A1	B2	B3	C	E
Built-up (SF)	722	797	819	711	948	711	819	851	948	1,400
45	2-45-1	2-45-2	2-45-3	2-45-4	2-45-5	2-45-6	2-45-7	2-45-8	2-45-9	2-45-10
Type	A2	B1	B2	A1	C	A1	B2	B3	C	E
Built-up (SF)	722	797	819	711	948	711	819	851	948	1,400
43A	2-43A-1	2-43A-2	2-43A-3	2-43A-4	2-43A-5	2-43A-6	2-43A-7	2-43A-8	2-43A-9	2-43A-10
Type	A2	B1	B2	A1	C	A1	B2	B3	C	E
Built-up (SF)	722	797	819	711	948	711	819	851	948	1,400
43	2-43-1	2-43-2	2-43-3	2-43-4	2-43-5	2-43-6	2-43-7	2-43-8	2-43-9	2-43-10
Type	A2	B1	B2	A1	C	A1	B2	B3	C	E
Built-up (SF)	722	797	819	711	948	711	819	851	948	1,400
42	2-42-1	2-42-2	2-42-3	2-42-4	2-42-5	2-42-6	2-42-7	2-42-8	2-42-9	2-42-10
Type	A2	B1	B2	A1	C	A1	B2	B3	C	E
Built-up (SF)	722	797	819	711	948	711	819	851	948	1,400
41	2-41-1	2-41-2	2-41-3	2-41-4	2-41-5	2-41-6	2-41-7	2-41-8	2-41-9	2-41-10
Type	A2	B1	B2	A1	C	A1	B2	B3	C	E
Built-up (SF)	722	797	819	711	948	711	819	851	948	1,400
40	2-40-1	2-40-2	2-40-3	2-40-4	2-40-5	2-40-6	2-40-7	2-40-8	2-40-9	2-40-10
Type	A2	B1	B2	A1	C	A1	B2	B3	C	E
Built-up (SF)	722	797	819	711	948	711	819	851	948	1,400
39	2-39-1	2-39-2	2-39-3	2-39-4	2-39-5	2-39-6	2-39-7	2-39-8	2-39-9	2-39-10
Type	A2	B1	B2	A1	C	A1	B2	B3	C	E
Built-up (SF)	722	797	819	711	948	711	819	851	948	1,400
38	2-38-1	2-38-2	2-38-3	2-38-4	2-38-5	2-38-6	2-38-7	2-38-8	2-38-9	2-38-10
Type	A2	B1	B2	A1	C	A1	B2	B3	C	E
Built-up (SF)	722	797	819	711	948	711	819	851	948	1,400
37	2-37-1	2-37-2	2-37-3	2-37-4	2-37-5	2-37-6	2-37-7	2-37-8	2-37-9	2-37-10
Type	A2	B1	B2	A1	C	A1	B2	B3	C	E
Built-up (SF)	722	797	819	711	948	711	819	851	948	1,400
36	2-36-1	2-36-2	2-36-3	2-36-4	2-36-5	2-36-6	2-36-7	2-36-8	2-36-9	2-36-10
Type	A2	B1	B2	A1	C	A1	B2	B3	C	E
Built-up (SF)	722	797	819	711	948	711	819	851	948	1,400
35	2-35-1	2-35-2	2-35-3	2-35-4	2-35-5	2-35-6	2-35-7	2-35-8	2-35-9	2-35-10
Type	A2	B1	B2	A1	C	A1	B2	B3	C	E
Built-up (SF)	722	797	808	700	937	700	808	851	937	1,389
33A	2-33A-1	2-33A-2	2-33A-3	2-33A-4	2-33A-5	2-33A-6	2-33A-7	2-33A-8	2-33A-9	2-33A-10
Type	A2	B1	B2	A1	C	A1	B2	B3	C	E
Built-up (SF)	722	797	808	700	937	700	808	851	937	1,389
33	2-33-1	2-33-2	2-33-3	2-33-4	2-33-5	2-33-6	2-33-7	2-33-8	2-33-9	2-33-10
Type	A2	B1	B2	A1	C	A1	B2	B3	C	E
Built-up (SF)	722	797	808	700	937	700	808	851	937	1,389
32	2-32-1	2-32-2	2-32-3	2-32-4	2-32-5	2-32-6	2-32-7	2-32-8	2-32-9	2-32-10
Type	A2	B1	B2	A1	C	A1	B2	B3	C	E
Built-up (SF)	722	797	808	700	937	700	808	851	937	1,389
31	2-31-1	2-31-2	2-31-3	2-31-4	2-31-5	2-31-6	2-31-7	2-31-8	2-31-9	2-31-10
Type	A2	B1	B2	A1	C	A1	B2	B3	C	E
Built-up (SF)	722	797	808	700	937	700	808	851	937	1,389
30	2-30-1	2-30-2	2-30-3	2-30-4	2-30-5	2-30-6	2-30-7	2-30-8	2-30-9	2-30-10
Type	A2	B1	B2	A1	C	A1	B2	B3	C	E
Built-up (SF)	722	797	808	700	937	700	808	851	937	1,389
29	2-29-1	2-29-2	2-29-3	2-29-4	2-29-5	2-29-6	2-29-7	2-29-8	2-29-9	2-29-10
Type	A2	B1	B2	A1	C	A1	B2	B3	C	E
Built-up (SF)	722	797	808	700	937	700	808	851	937	1,389
28	2-28-1	2-28-2	2-28-3	2-28-4	2-28-5	2-28-6	2-28-7	2-28-8	2-28-9	2-28-10
Type	A2	B1	B2	A1	C	A1	B2	B3	C	E
Built-up (SF)	722	797	808	700	937	700	808	851	937	1,389
27	2-27-1	2-27-2	2-27-3	2-27-4	2-27-5	2-27-6	2-27-7	2-27-8	2-27-9	2-27-10
Type	A2	B1	B2	A1	C	A1	B2	B3	C	E
Built-up (SF)	722	797	808	700	937	700	808	851	937	1,389
26	2-26-1	2-26-2	2-26-3	2-26-4	2-26-5	2-26-6	2-26-7	2-26-8	2-26-9	2-26-10
Type	A2	B1	B2	A1	C	A1	B2	B3	C	E
Built-up (SF)	722	797	808	700	937	700	808	851	937	1,389
25	2-25-1	2-25-2	2-25-3	2-25-4	2-25-5	2-25-6	2-25-7	2-25-8	2-25-9	2-25-10
Type	A2	B1	B2	A1	C	A1	B2	B3	C	E
Built-up (SF)	722	797	808	700	937	700	808	851	937	1,389
23A	2-23A-1	2-23A-2	2-23A-3	2-23A-4	2-23A-5	2-23A-6	2-23A-7	2-23A-8	2-23A-9	2-23A-10
Type	A2	B1	B2	A1	C	A1	B2	B3	C	E
Built-up (SF)	722	797	808	700	937	700	808	851	937	1,389
23	2-23-1	2-23-2	2-23-3	2-23-4	2-23-5	2-23-6	2-23-7	2-23-8	2-23-9	2-23-10
Type	A2	B1	B2	A1	C	A1	B2	B3	C	E
Built-up (SF)	722	797	808	700	937	700	808	851	937	1,389
22	2-22-1	2-22-2	2-22-3	2-22-4	2-22-5	2-22-6	2-22-7	2-22-8	2-22-9	2-22-10
Type	A2	B1	B2	A1	C	A1	B2	B3	C	E
Built-up (SF)	722	797	808	700	937	700	808	851	937	1,389
21	2-21-1	2-21-2	2-21-3	2-21-4	2-21-5	2-21-6	2-21-7	2-21-8	2-21-9	2-21-10
Type	A2	B1	B2	A1	C	A1	B2	B3	C	E
Built-up (SF)	722	797	808	700	937	700	808	851	937	1,389
20	2-20-1	2-20-2	2-20-3	2-20-4	2-20-5	2-20-6	2-20-7			



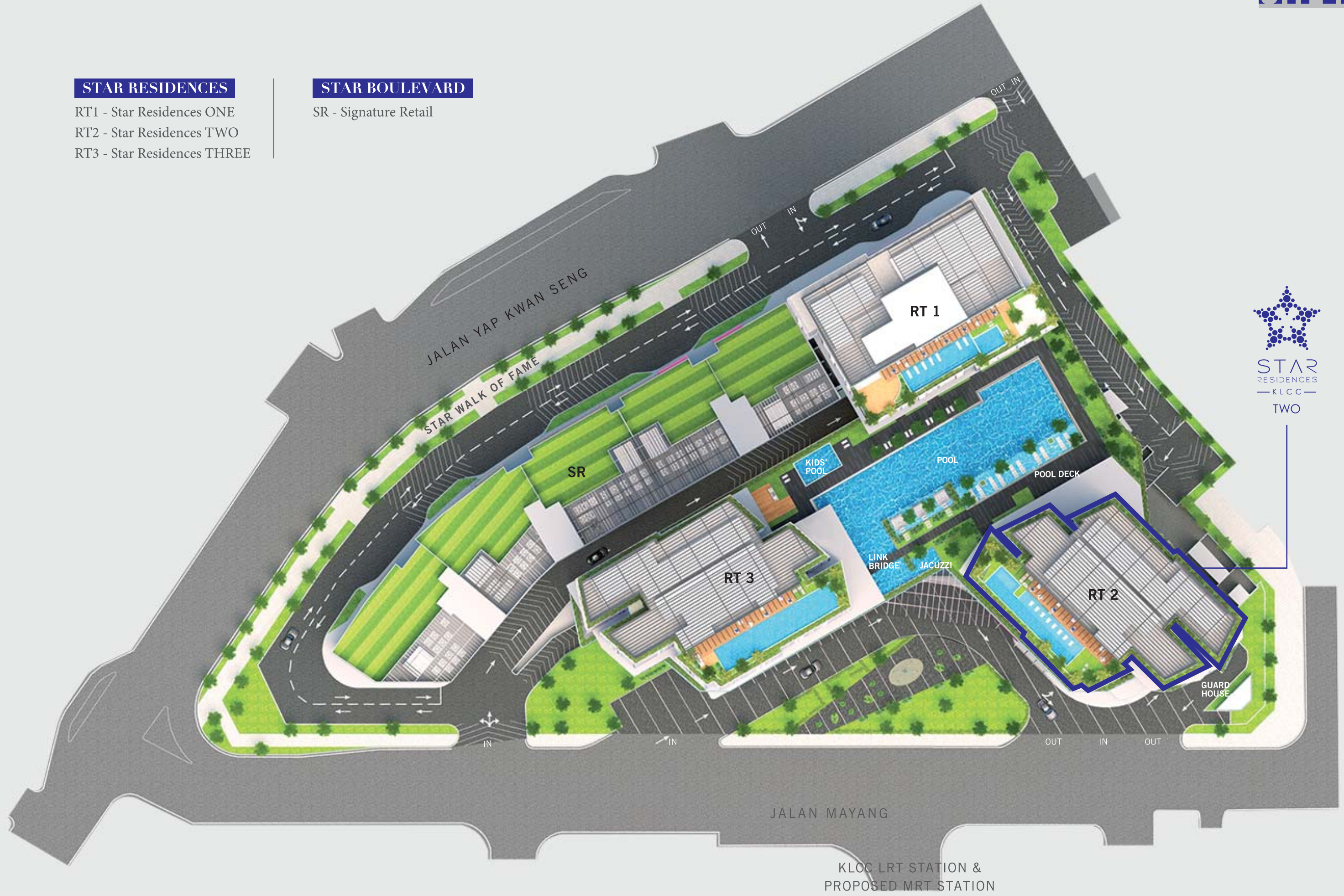
# MASTER SITE PLAN

## STAR RESIDENCES

- RT1 - Star Residences ONE
- RT2 - Star Residences TWO
- RT3 - Star Residences THREE

## STAR BOULEVARD

- SR - Signature Retail





**FACILITIES**

- 1. Outdoor Playground
- 2. Reading Room
- 3. Child Play Area
- 4. Chill Out Area
- 5. Gym Area
- 6. Dance / Yoga Room
- 7. Kickboxing Room
- 8. Reflective Pool
- 9. Kids' Pool
- 10. Pool
- 11. Link Bridge
- 12. Jacuzzi
- 13. Pool Deck
- 14. Floating Cabana
- 15. Rock Garden
- 16. Koi Pond
- 17. Pre-Function
- 18. Sports Lounge
- 19. VIP KTV 1
- 20. VIP KTV 2
- 21. KTV Room 1
- 22. KTV Room 2
- 23. KTV Room 3
- 24. Outdoor Pavilion / BBQ Lounge
- 25. Hammock Garden
- 26. Banquet Room
- 27. Hydrotherapy Shower
- 28. Surau (M)
- 29. Surau (F)
- 30. Laundromat
- 31. Convenience Store
- 32. Management Office
- 33. Meeting Room
- 34. Changing Room (M)
- 35. Changing Room (F)
- 36. Toilet (M)
- 37. Toilet (F)



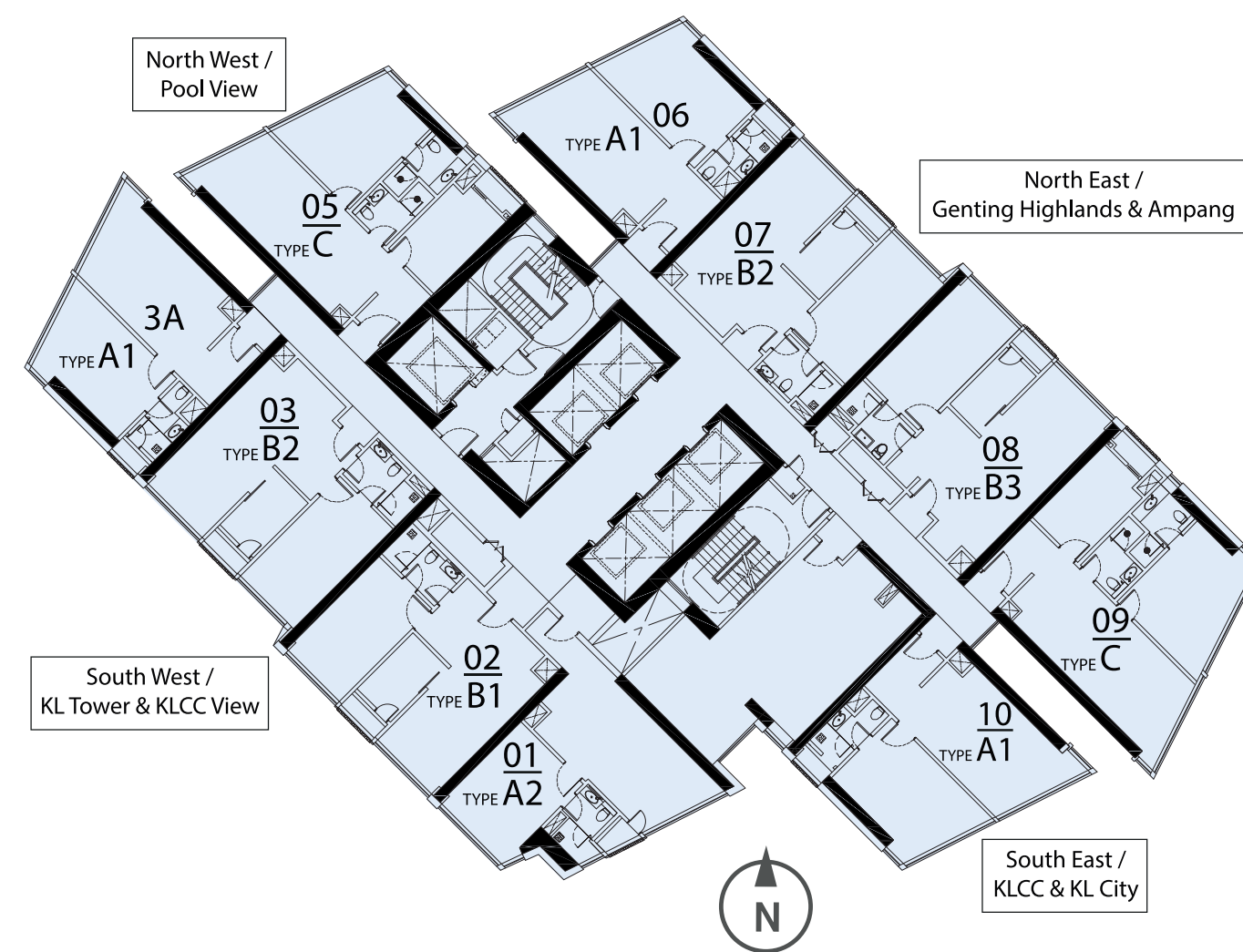




LEVEL 7 TO 52  
(EXCEPT M&E LEVEL)

Legend:

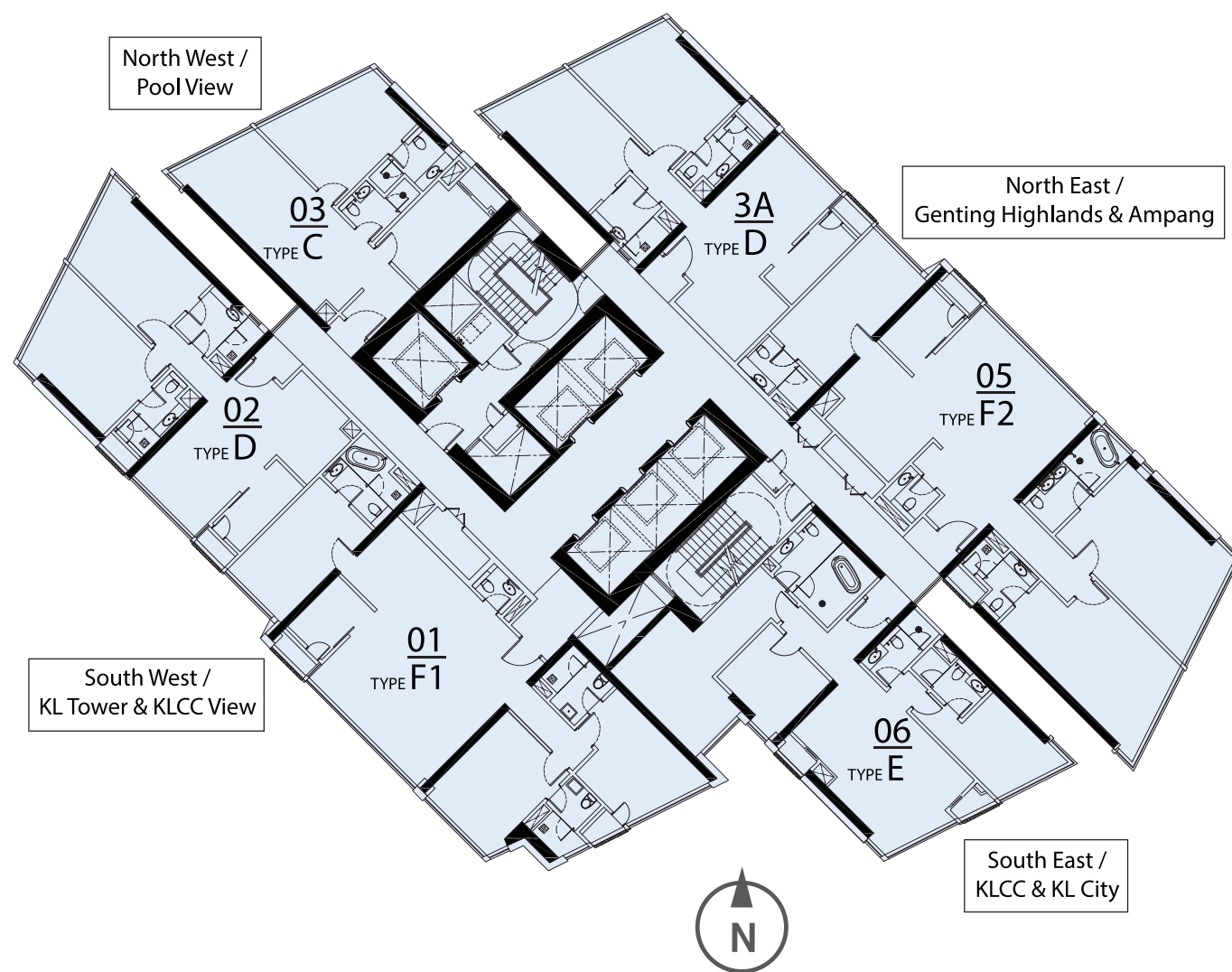
Type	Sq.m.
A1	65 / 66
A2	67
B1	74
B2	75 / 76
B3	79
C	87 / 88
E	129 / 130



LEVEL 13A, 30, 43A - M&E LEVEL

Legend:

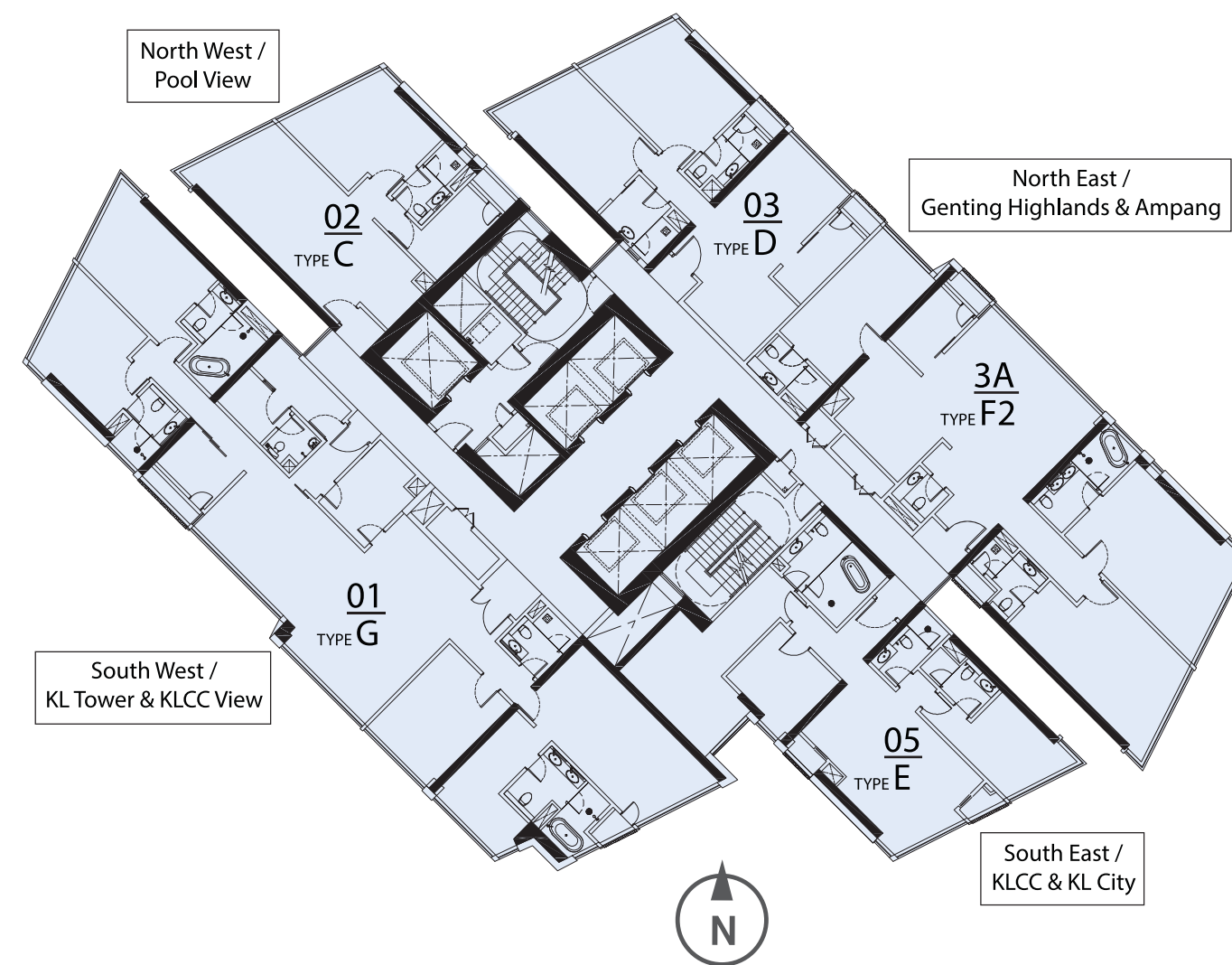
Type	Sq.m.
A1	65 / 66
A2	67
B1	74
B2	75 / 76
B3	79
C	87 / 88



LEVEL 53 & 53A

Legend:

Type	Sq.m.
C	88
D	112
E	130
F1	168
F2	194



LEVEL 55 & 56

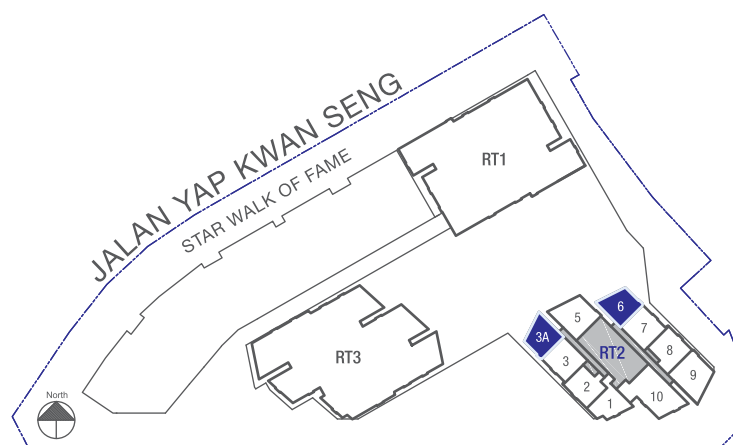
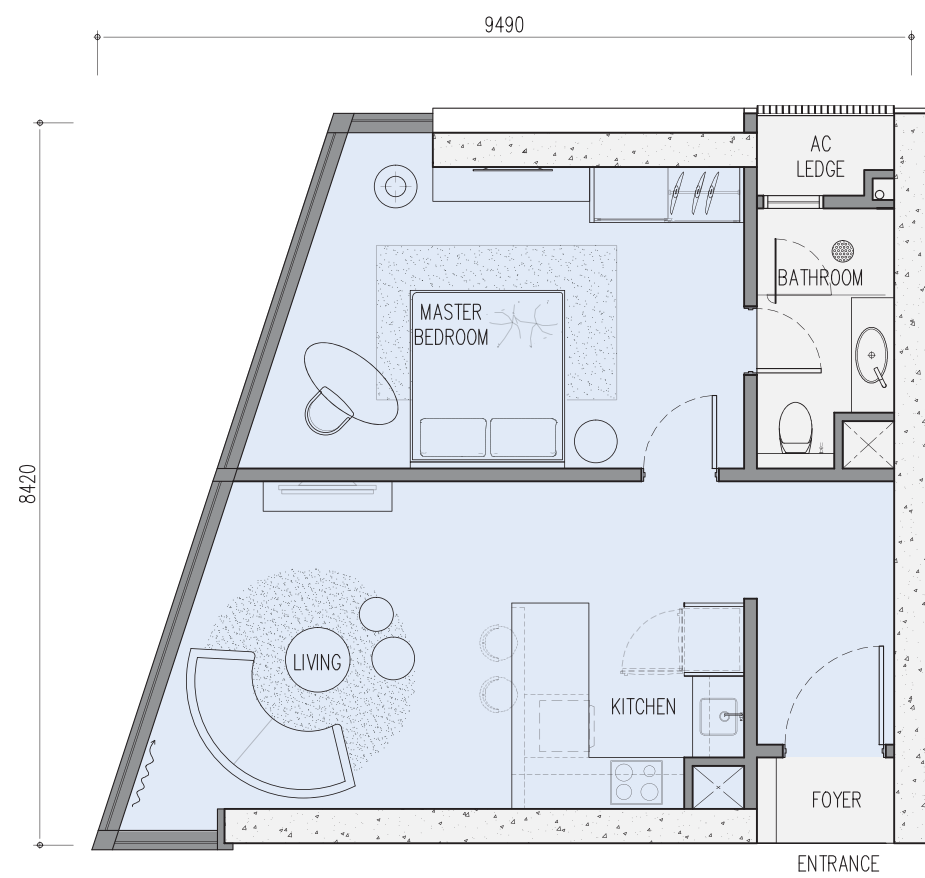
Legend:

Type	Sq.m.
C	88
D	112
E	130
F2	194
G	276

# type A1

1 Bedroom

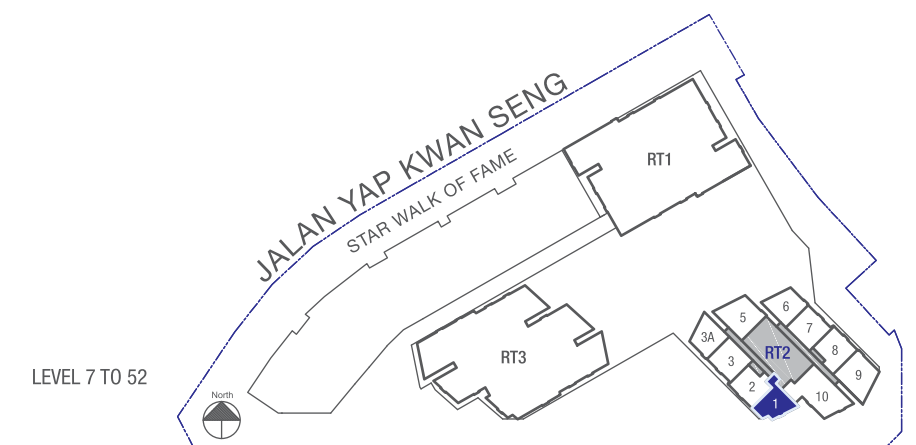
Built-up	Level 7 - 35	Level 36 - 52
Main parcel	678 sq. ft.	689 sq. ft.
A/C ledge	22 sq. ft.	22 sq. ft.
Total sq. ft. (sq. m.)	700 sq. ft. (65 sq. m.)	711 sq. ft. (66 sq. m.)



# type A2

1 Bedroom

Built-up	Level 7 - 52
Main parcel	700 sq. ft.
A/C ledge	22 sq. ft.
Total sq. ft. (sq. m.)	722 sq. ft. (67 sq. m.)

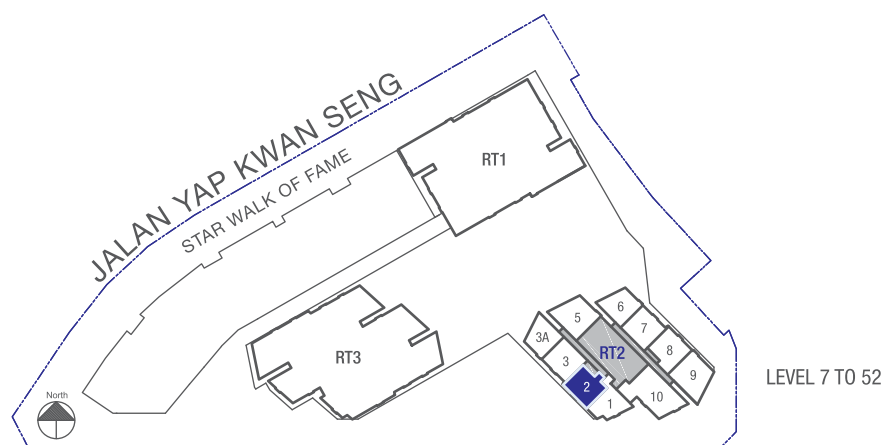
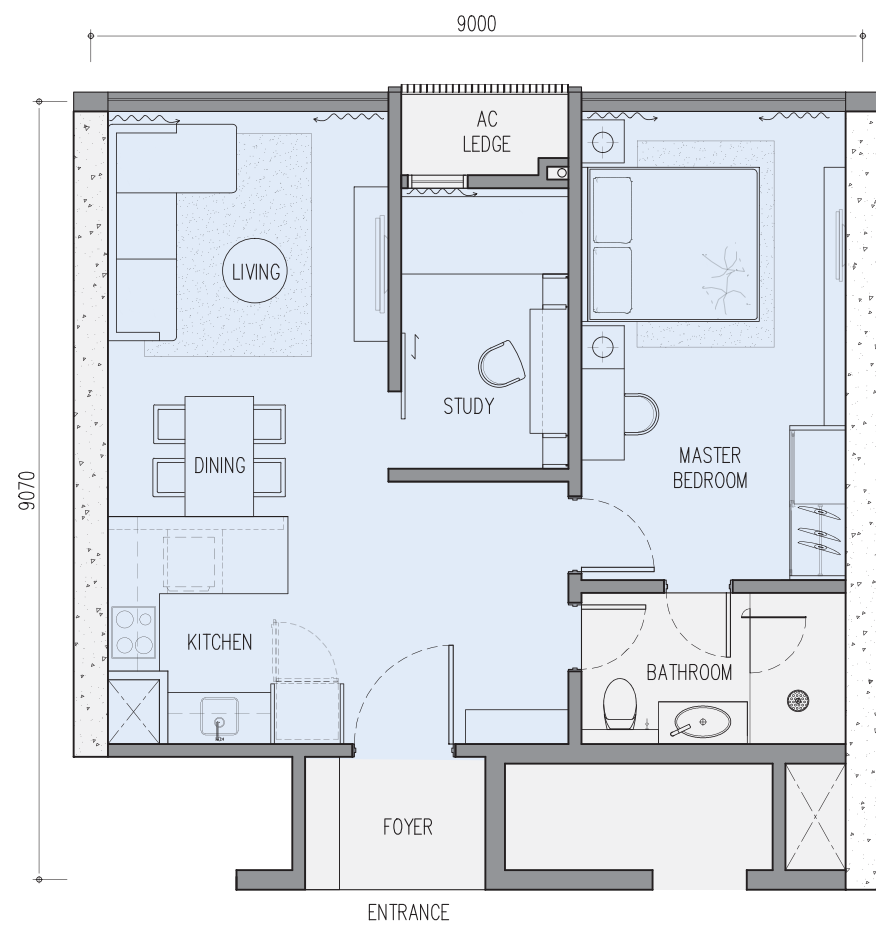




# type B1

1 + 1 Bedrooms

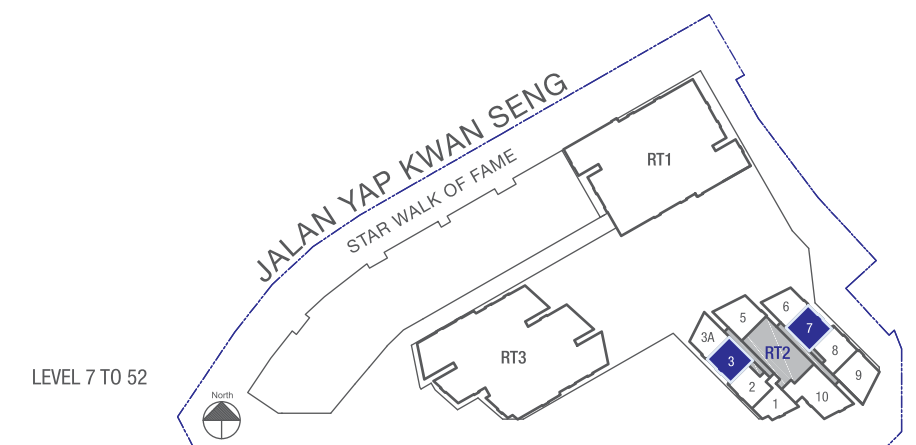
Built-up	Level 7 - 52
Main parcel	775 sq. ft.
A/C ledge	22 sq. ft.
Total sq. ft. (sq. m.)	797 sq. ft. (74 sq. m.)



# type B2

1 + 1 Bedrooms

Built-up	Level 7 - 35	Level 36 - 52
Main parcel	786 sq. ft.	797 sq. ft.
A/C ledge	22 sq. ft.	22 sq. ft.
Total sq. ft. (sq. m.)	808 sq. ft. (75 sq. m.)	819 sq. ft. (76 sq. m.)

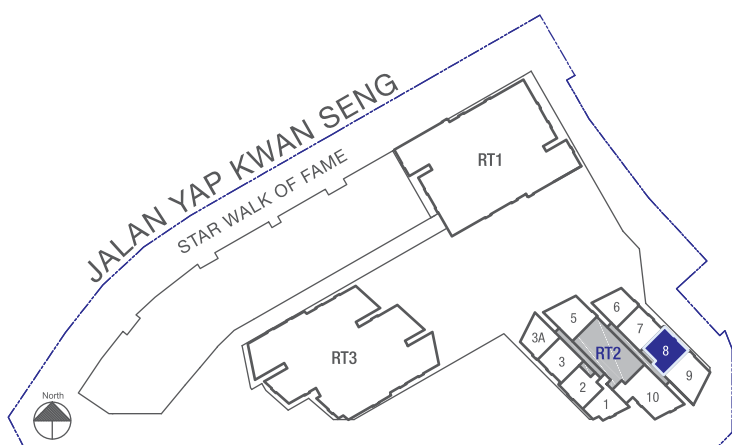




# type B3

1 + 1 Bedrooms

Built-up	Level 7 - 52
Main parcel	829 sq. ft.
A/C ledge	22 sq. ft.
Total sq. ft. (sq. m.)	851 sq. ft. (79 sq. m.)

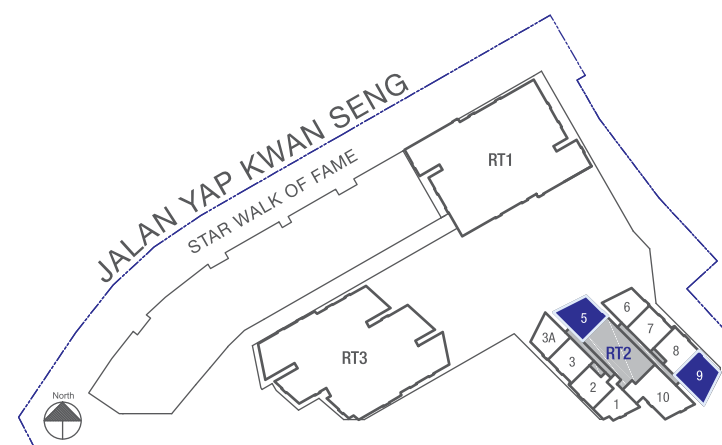
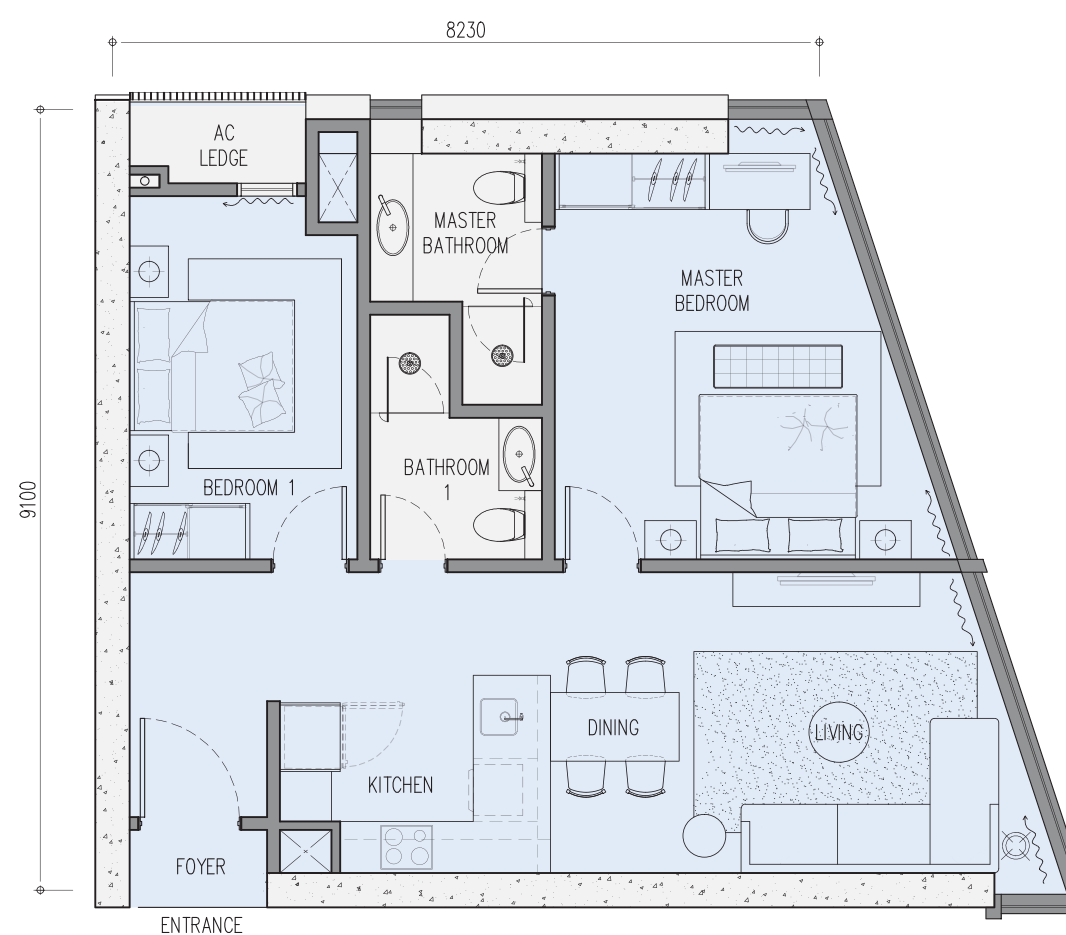


LEVEL 7 TO 52

# type C

2 Bedrooms

Built-up	Level 7 - 35	Level 36 - 56
Main parcel	915 sq. ft.	926 sq. ft.
A/C ledge	22 sq. ft.	22 sq. ft.
Total sq. ft. (sq. m.)	937 sq. ft. (87 sq. m.)	948 sq. ft. (88 sq. m.)



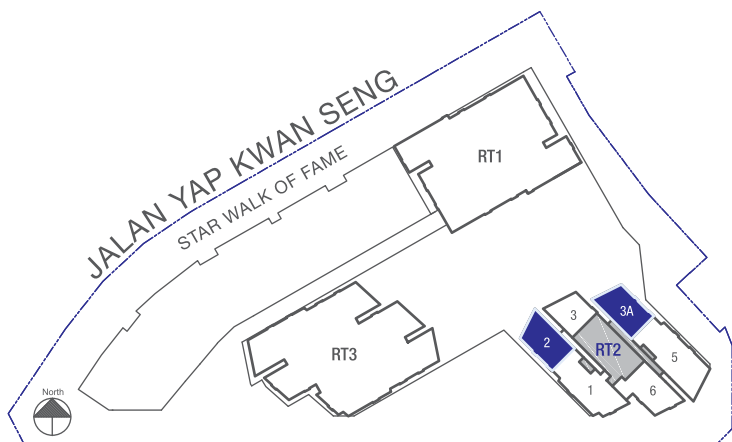
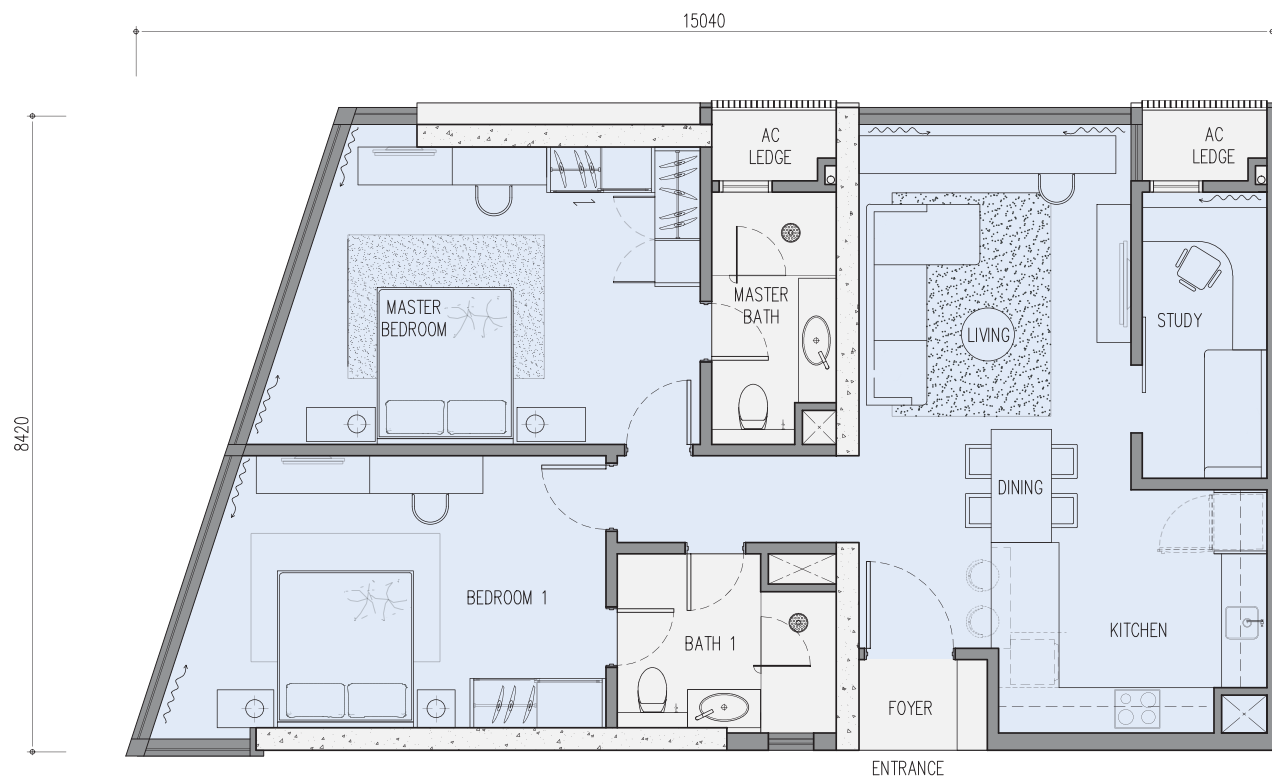
LEVEL 7 TO 52  
 \*Unit 2 applicable to level 55 & 56 only  
 \*Unit 3 applicable to level 53 & 53A only



type  
**D**

2 + 1 Bedrooms

Built-up	Level 53 - 56
Main parcel	1,162 sq. ft.
A/C ledge	44 sq. ft.
Total sq. ft. (sq. m.)	1,206 sq. ft. (112 sq. m.)

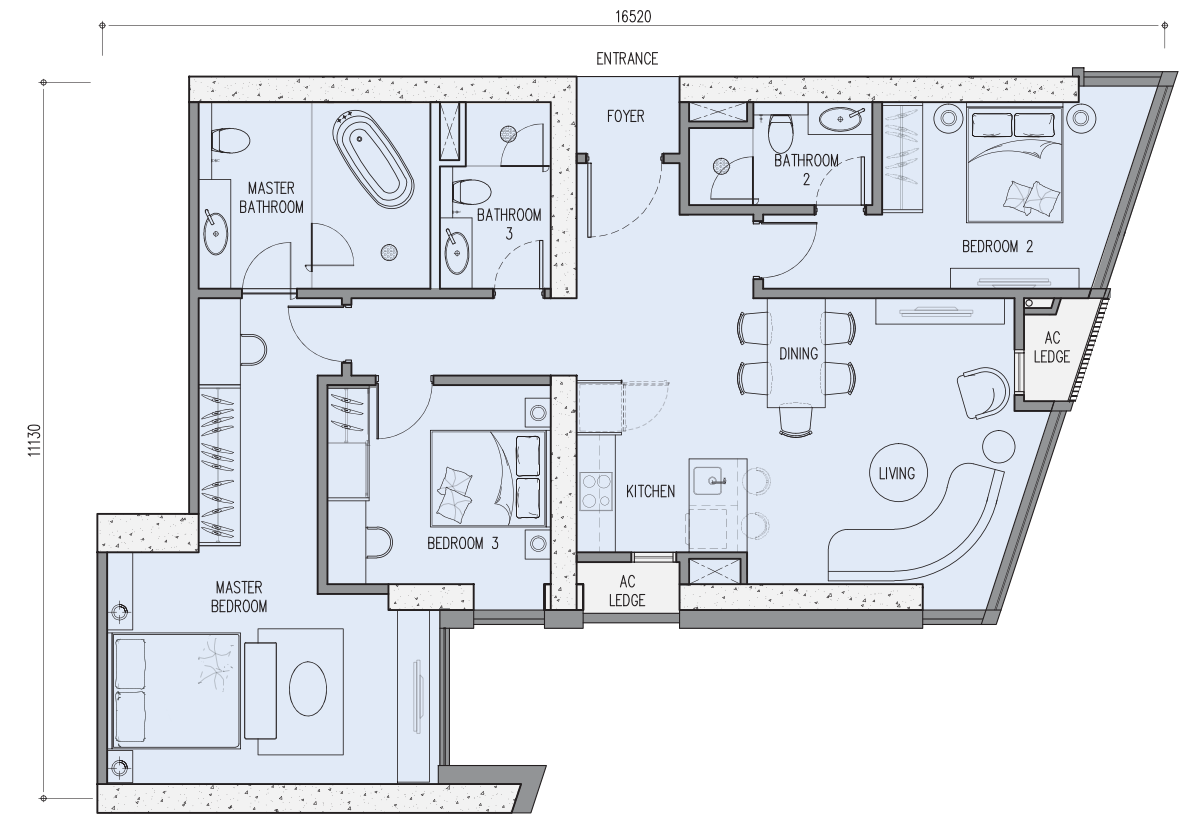


LEVEL 53 TO 53A

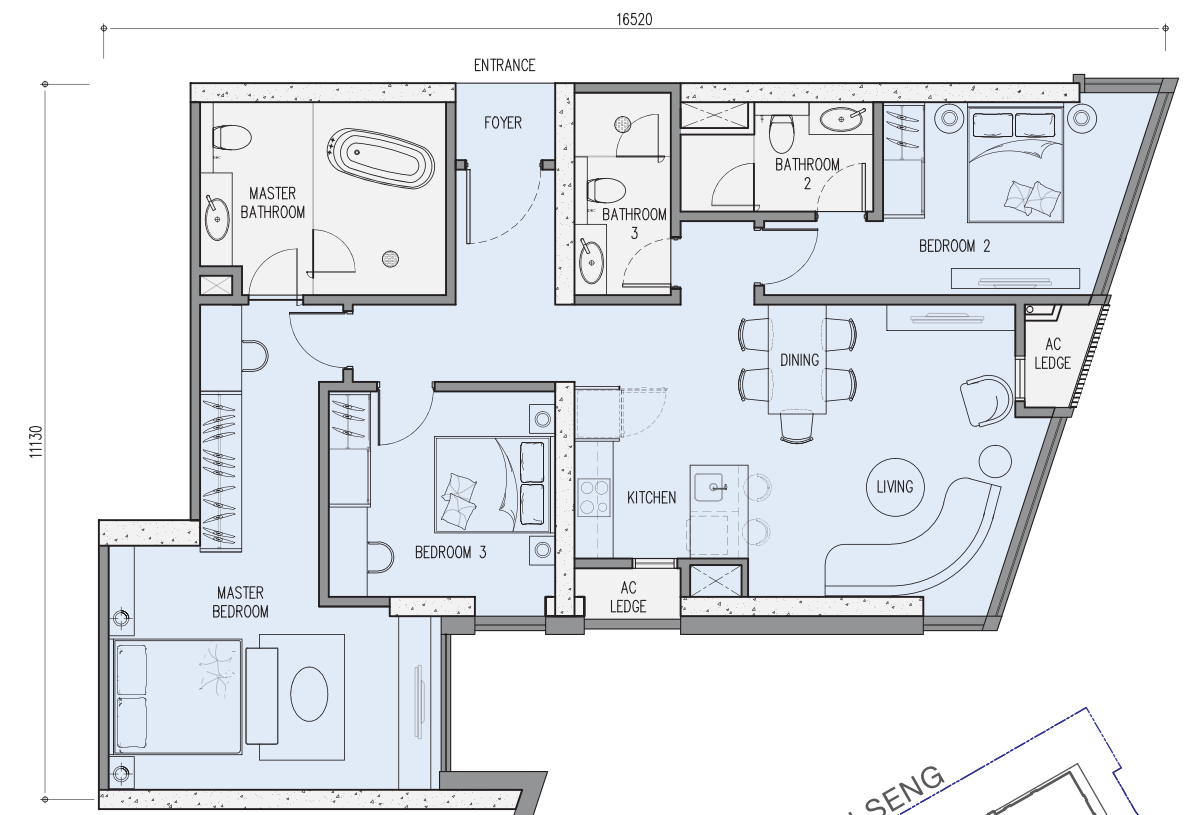
type  
**E**

3 Bedrooms

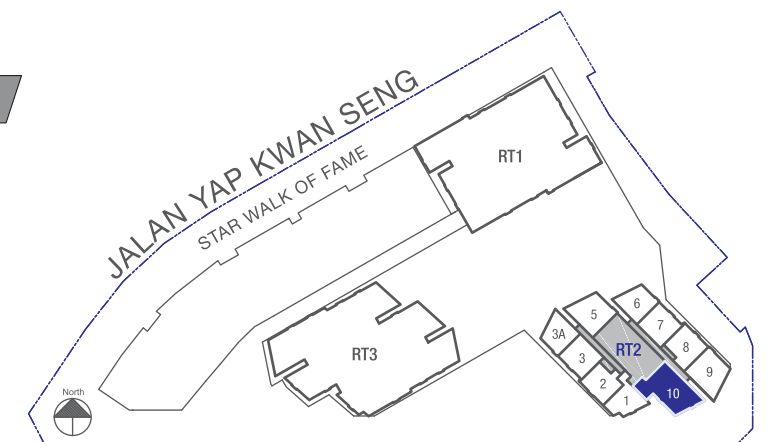
Built-up	Level 7 - 35	Level 36 - 56
Main parcel	1,345 sq. ft.	1,356 sq. ft.
A/C ledge	44 sq. ft.	44 sq. ft.
Total sq. ft. (sq. m.)	1,389 sq. ft. (129 sq. m.)	1,400 sq. ft. (130 sq. m.)



LEVEL 7 TO 52



LEVEL 53 TO 56



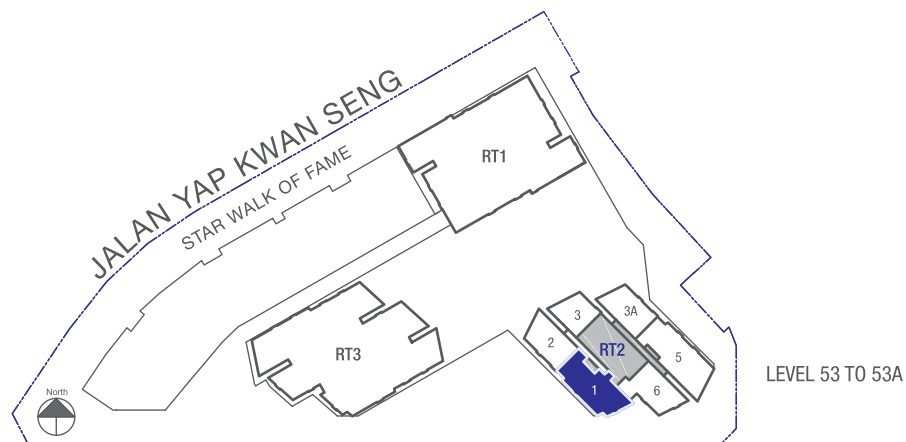
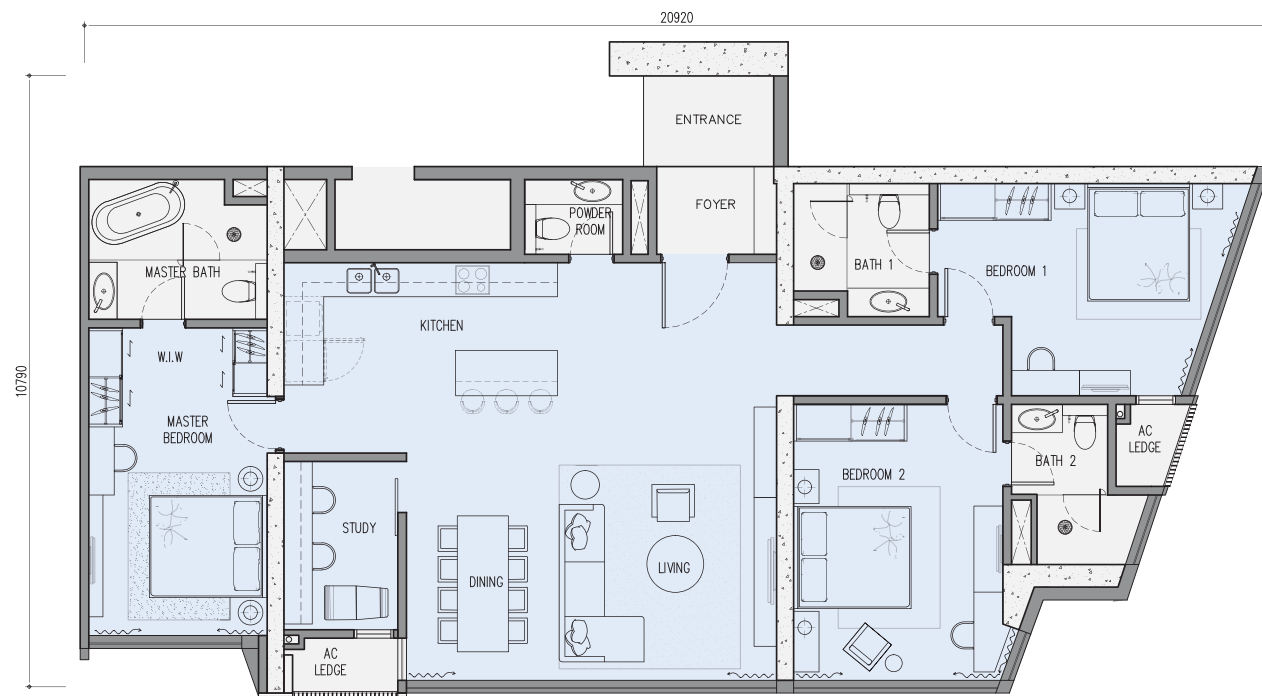
LEVEL 7 TO 52  
(Except M&E Floor)  
\*Unit 5 applicable to level 55 & 56 only  
\*Unit 6 applicable to level 53 & 53A only



# type F1

3 + 1 Bedrooms

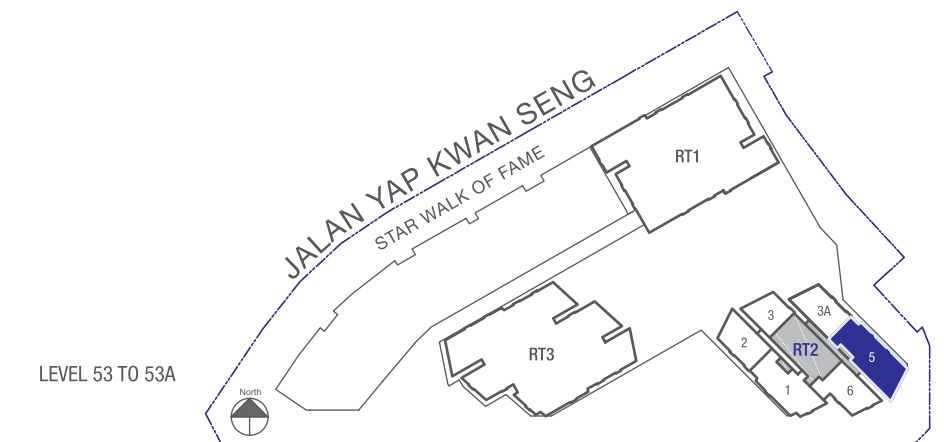
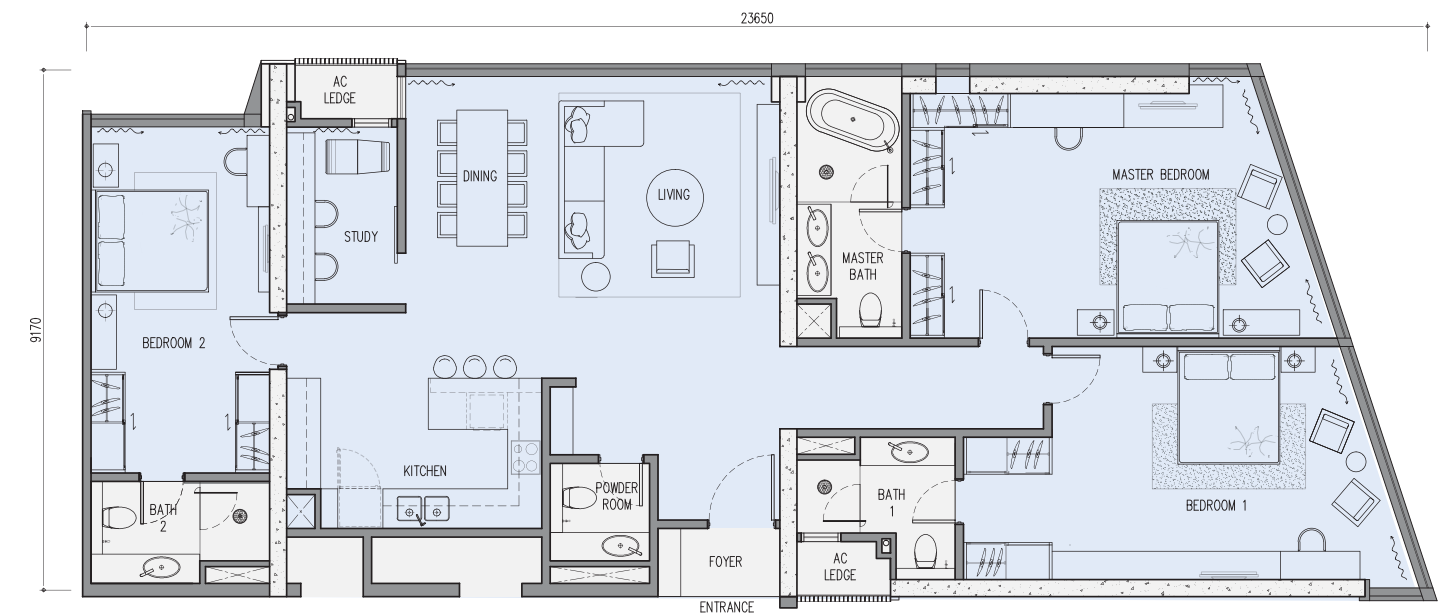
Built-up	Level 53 - 53A
Main parcel	1,765 sq. ft.
A/C ledge	44 sq. ft.
Total sq. ft. (sq. m.)	1,809 sq. ft. (168 sq. m.)



# type F2

3 + 1 Bedrooms

Built-up	Level 53 - 56
Main parcel	2,045 sq. ft.
A/C ledge	44 sq. ft.
Total sq. ft. (sq. m.)	2,089 sq. ft. (194 sq. m.)







A Joint Development By:

We are backed by two of the most reputable property developers in Malaysia – Symphony Life Berhad and United Malayan Land Berhad (“UMLand”), and a prestigious multinational builder – Samsung C&T.

**Symphony**  
Life

Listed on Bursa Malaysia, Symphony Life Group is recognized as one of Malaysia’s leading property developers. Its award-winning developments include the exclusive Tijani development in Kenny Hills, 6 Ceylon luxury condominiums in the heart of Kuala Lumpur, Taman Tasik Prima Lakeside Township, Twy @ Mont’ Kiara and Arata of Kenny Hills. Since its inception, Symphony Life Group has built more than 15,000 residential, commercial, retail and industrial properties throughout Malaysia.



The Township Division has 3 mixed township developments located in high growth areas of Malaysia. The townships of Bandar Seri Alam and Taman Seri Austin are strategically located within Iskandar Malaysia, Johor whilst Bandar Seri Putra is situated in Selangor and another upcoming township located in Pasir Gudang which will be called Seri Alam 2.

The Niche Division has to date completed 4 residential serviced residences and condominiums in Kuala Lumpur – Suasana Sentral Loft at KL Sentral, Suasana Bangsar in the upmarket suburb of Bangsar, Seri Bukit Ceylon and Suasana Bukit Ceylon. The Division is now actively developing Suasana, Iskandar Malaysia, an integrated development located in the heart of downtown Johor Bahru city centre, which comprises of serviced residences, hotel and retail. Somerset Puteri Harbour, a luxurious waterfront boutique serviced residences and The Waves @ Puteri Harbour are some of the newest projects in Nusajaya while UMCity Medini Lakeside at the gateway of Medini is a significant exclusive multi-phased mixed development in the financial enclave of Medini, Nusajaya, Iskandar Malaysia.

A Trusted Builder:



Samsung C&T is the trusted builder for Star Development. With the world’s most advanced technological expertise and experience in architecture, civil engineering, plant and housing development, Engineering & Construction Group of Samsung C&T is dedicated to providing customers with the best possible added value. The group has delivered landmark projects around the world including Malaysia’s Petronas Twin Towers and Burj Khalifa in Dubai, the world’s tallest building.

**Alpine Return Sdn Bhd** (645750-M)  
A-11-01, 11th Floor Wisma HB, Megan Avenue II  
Jalan Yap Kwan Seng, 50450 Kuala Lumpur  
General Line: +603 7490 2266 | Sales Line: +603 7490 2211  
Fax: +603 2181 8308 | Email: enquiry@star-residences.com

**+603 7490 2211**  
[www.star-residences.com](http://www.star-residences.com)

Type of Property: Residential Tower • Developer’s License No: 13677-2/12-2017/01080(L) • Validity Period: 17/12/2015 – 16/12/2017 • Advertising & Sales Permit No: 13677-2/12-2017/01080(P) • Validity Period: 17/12/2015 – 16/12/2017 • Approval Authority: Dewan Bandaraya Kuala Lumpur • Building Plan No: BP T3 OSC 2015 0951 • Land Tenure: Freehold • Land Encumbrances: OCBC Bank (Malaysia) Berhad • Expected Date of Completion: December 2020 • Total No. of Units: 482 • Built-up Size: 65 sq. m. – 276 sq. m. • Minimum Price: RM1,369,000 (approx.) • Maximum Price: RM7,257,600 (approx.) • 5% Bumiputra Discount.

All pictures and illustrations contained are artist’s impressions only. All statements and illustrations are subject to change without prior notice, as may be required by the developer’s consultants and / or the relevant authorities. Whilst every care has been taken in providing this information, the developer shall not be held responsible for variations. For avoidance of doubt, please refer to the Sales and Purchase Agreement for the actual specifications and descriptions.